



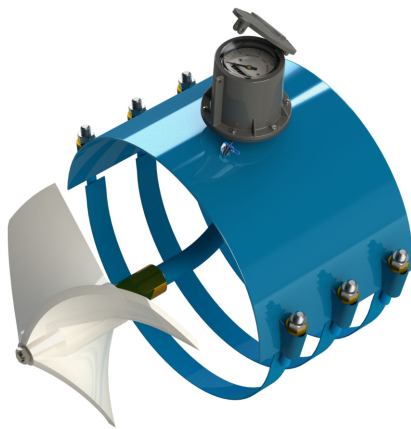
780.897.5869
BURKECALIBRATION.COM

**McCrometer McPropeller
Flow Meters
Agriculture and Irrigation**

Questions? Call us at 780-897-5869 or email info@burkecalibration.com

Mc Propeller Flow Meters

Ideal Flow Measurement for
Agriculture and Irrigation



The Best Solution For Irrigation Flow Measurement

Register Options

Mechanical Register - Standard

An instantaneous flowrate indicator with optional six-digit or seven-digit straight reading totalizer and standard. The register is hermetically sealed with a die cast aluminum sealed. This protective housing includes a domed acrylic lens and hinged lens cover with locking clasp.



Digital Register - Optional

The FlowCom digital register has an expected battery life of 6-10 years and is housed in a NEMA 4X rated, durable enclosure. FlowCom's indicator and totalizer has a non-volatile memory. The five-digit indicator shows flow rate in 22 different units, including GPM, CFS or MGD. The eight-digit totalizer provides volumetric flow data and is available in 20 different units including Gallons, AF or CF. Units of measure are user-selectable. Available with optional 4-20mA and/or pulse output.



Wireless Register - Optional

FlowConnect with Exact Read advanced technology ensures you have an accurate and exact reading from register to website. Unlike traditional telemetry systems, FlowConnect's unique one-piece design eliminates the need for cables, pole mounting and other hardware. Get more data, faster and have it delivered to the palm of your hand with FlowConnect. Available with cellular or satellite communication protocols.



Heavy Gauge Stainless Steel Support

Resists corrosion

Magnetic Coupling System

Isolates register and drive system from flow and allows unrestricted impeller movement

Long-lasting Stainless Steel Ball Bearings

Factory lubricated and protected from flow stream

Straightening Vanes

For optimum flow profiles

Corrosion-Resistant Impeller

Made of durable polymer material, factory calibrated to retain accuracy

Wide Variety of End Fittings

Including threaded, grooved-end, flanged, and weld-on

Flexible Cable Drive

Simple and durable, protected by self-lubricating cable guide

Epoxy-Coated Carbon Steel Body

All stainless steel construction available

Simple and Effective

- Available with all of the features you need, none of the features you don't
- Requires no power to operate, no batteries to fail
- Straightforward, hassle-free installation; just cut the pipe and bolt on
- Easy to read with a mechanical register that calculates both total and instantaneous flow

McCrometer Propeller Meter

When it comes to your flow measurement needs, there are many options available. But for a highly accurate and reliable product at a reasonable price, McCrometer makes the most sense.

The Mc Propeller is the industry standard for propeller technology, continually outperforming all other flow meters in the agricultural and turf markets.

Our flow meters are simple to install and operate, require minimal maintenance, and are equipped with all the features you need. It's no wonder that it's the #1 choice for irrigation use.

		Pressure Rating	Standard Totalizer	Indicator/Totalizer	Digital	Wireless
4" - 16"	M0300 - Bolt-on Saddle <ul style="list-style-type: none"> Stainless steel construction Can be used on a variety of pipe materials: Steel, plastic, cast iron, cement, or asbestos cement 	150 PSI	Standard	Standard	Optional	Optional
4" - 12"	M0300SW - Bolt-on Saddle Surface Water <ul style="list-style-type: none"> Stainless steel construction Can be used on a variety of pipe materials: Steel, plastic, cast iron, cement, or asbestos cement 	150 PSI	Standard	Standard	Optional	Optional
18" - 48"	M1400 - Large Line, Bolt-on Saddle <ul style="list-style-type: none"> Can be used on a variety of pipe materials: Steel, plastic, cast iron, cement, or asbestos cement 	75 PSI	Standard	Standard	Optional	Optional
10" - 24"	M1700 - Open Flow <ul style="list-style-type: none"> Can be used on a variety of pipe materials: Steel, plastic, cast iron, cement, or asbestos cement 	Atmospheric	Standard	Standard	Optional	Optional
24" - 72"	M1700 - Open Flow <ul style="list-style-type: none"> Can be used on a variety of pipe materials: Steel, plastic, cast iron, cement, or asbestos cement 	Atmospheric	N/A	N/A	Standard	Optional
2" - 12"	MF100 - Flanged End <ul style="list-style-type: none"> AWWA Class D Flanges Optional flow straightening vanes welded in the tube 	150 PSI	Standard	Standard	Optional	Optional
6" - 12"	ML100 - Irrigation Flanged <ul style="list-style-type: none"> Optional flow straightening vanes welded in the tube 	75 PSI	Standard	Standard	Optional	Optional



Options and Accessories

- Electronic outputs connect with your system for better irrigation management
- Over-run bearing extends meter life in high flow applications
- 7-digit totalizer increases the maximum total recordable volume

TYPICAL APPLICATIONS

- Agricultural Irrigation
- Turf Irrigation
- Center Pivot Systems
- Drip and Sprinkler Systems
- Greenhouse Growers
- Park Management
- Pumping Stations
- Canal Laterals
- Golf Courses

Designed for Accuracy, Built to Last

- Durable, built with a time-tested rugged design
- Consistent and repeatable measurements due to the simplicity of our proven propeller design
- Versatile, with a wide range of applications

To find out more about our flow measurement products, or for a free flow evaluation, contact your nearest Mc Propeller representative today or visit our website at www.mccrometer.com. You can reach us directly at 1-800-220-2279.

Specifications

All flow meters comply with the American Water Works Association Standard No. C704-08.

PERFORMANCE

Accuracy/Repeatability	$\pm 2\%$ of reading guaranteed throughout full range; $\pm 1\%$ over reduced range; calibrated in our NIST traceable test facilities. Repeatability of 0.25% or better.
Maximum Temperature	(Standard Construction) 160°F constant.

MATERIALS

Bearing Assembly	Impeller shaft is 316 stainless steel. Ball bearings are 440C stainless steel.
Register	An instantaneous flowrate indicator and six-digit straight-reading totalizer are standard. The register is hermetically sealed within a die-cast aluminum case. This protective housing includes a domed acrylic lens and a hinged lens cover with locking hasp.
Propeller	Propellers are manufactured of high-impact plastic, retaining their shape and accuracy over the life of the meter. High temperature impeller is optional.

Any published technical data and specifications are subject to change without notice.

The Flow Straightener

A tight-spot solution that saves money

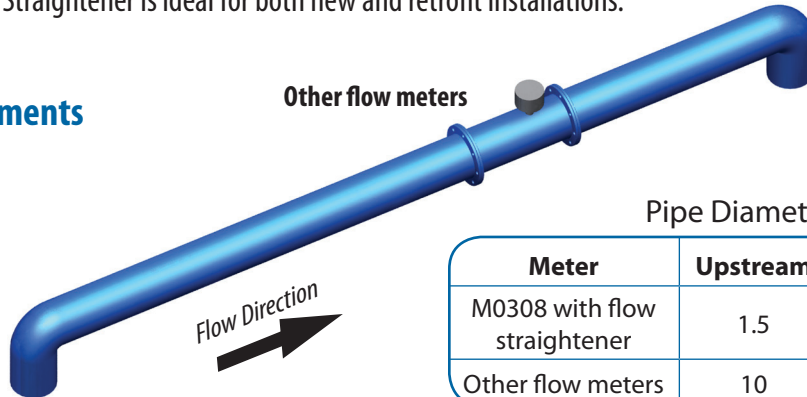
By reshaping irregular flow into a smooth stream, the advanced Flow Straightener offers higher accuracy and repeatability when installed in as little as 1.5 pipe diameters from chemigation, butterfly and gate valves, out-of-plane elbows, and reducers. Saving money by reducing piping and labor costs, the Flow Straightener is ideal for both new and retrofit installations.

Straight Pipe Requirements

Mc Propeller M0308 with flow straightener



Other flow meters



Pipe Diameters

Meter	Upstream	Downstream
M0308 with flow straightener	1.5	1
Other flow meters	10	5



Committed to Quality Manufacturing in the USA



McCrometer prides itself on the fact that all of its flow meters are designed, manufactured, and tested in the USA. Manufacturing takes place in our headquarters in Hemet, California and we own and operate one of the world's largest volumetric test facilities in Porterville, California. Our manufacturing facilities and quality control systems are the foundation for being a trusted supplier. Our USA based, high quality manufacturing is another reason our customers around the world have confidently chosen McCrometer flow meters for their most challenging flow applications since 1955.

